

# Sustainable Product Guide



We signed up to the Weaver sustainability programme in xxxx, since then we have been certified with the following...



2023

# Working Towards

This is to show that

Skye Direct

are working towards the following 3 pillars within the Weaver social sustainability programme.



*J. Mahony*

*[Signature]*

Powered by



Externally accredited by



To become Weaver certified this company is taking an intelligent and practical approach to reducing their carbon footprint and improving their environmental performance in various ways. They have shown carbon savings since enrolling on the programme and at least one exceptional environmental achievement. Being Weaver certifies their commitment to providing the best service to their customers, staff and suppliers.

Office Friendly can be contacted on: web: [www.officefriendly.co.uk](http://www.officefriendly.co.uk) email: [hello@officefriendly.co.uk](mailto:hello@officefriendly.co.uk) telephone: 0300 303 7077  
Office Friendly Dealer Association Ltd. Registered in England and Wales. Company No. IP29061R.

## Are you tired of feeling lost in a sea of acronyms and certifications when trying to make an informed purchase?

Fear not! We have your back with a handy guide that will help you understand what each sustainable accreditation and scheme means.



### Recyclable

Many items are made of raw ingredients that are easily recyclable. It is a legal requirement to dispose of waste carefully at the end of their life so that the maximum product is recycled. Recycling your waste means that it can be used to make new products, using less energy and raw materials.

There are often specific bins for recycling your waste at work, so check the recyclability of the product you're purchasing within your workplace. Choosing a product which has the ability to be recycled at the end of its life is a sustainable choice.



### Recycled

Want to do your part for the planet? Look no further than products that contain recycled materials! By using less raw ingredients and energy during production, these items are a great way to reduce your environmental impact.

And when it comes to plastic-based products, recycled content is especially important. By choosing items with a higher recycled content, you're helping to reduce the amount of plastic waste that ends up in landfills or the ocean. Plus, you can feel good knowing that you're supporting a circular economy by giving new life to materials that might otherwise be discarded.



### Certified Carbon Neutral

Being certified carbon neutral means that the carbon emissions associated with the entire lifecycle of that product, from the raw material sourcing and manufacturing to distribution and disposal, have been calculated and offset through the purchase of carbon credits or other mechanisms that reduce carbon emissions elsewhere.

Carbon neutrality is achieved by first reducing the product's carbon footprint minimised through energy efficiency, renewable energy use, and other sustainable practices. Once the carbon footprint has been minimized, any remaining emissions are offset through the purchase of carbon credits, which fund projects that reduce greenhouse gas emissions, such as renewable energy, reforestation, and energy efficiency projects.



### Fully Biodegradable

Did you know that some items are made of ingredients that can break down naturally, thanks to bacteria and other living organisms? This is known as biodegradation, and it's a key way to help avoid pollution and keep our planet healthy.

However, biodegradation requires specific conditions to take place. For example, some products need to encounter water, while others may require an industrial composter. Without the right conditions, these items may not break down as intended, leaving them to cause damage to the environment instead.

We want to help you make the most sustainable choices possible. That's why we advise checking your workplace's waste stream management policies for biodegradable items. By ensuring that these items are disposed of properly, you can help promote biodegradation and reduce the amount of waste that ends up in landfills.



### Blue Angel

The Blue Angel is a voluntary environmental label awarded to products and services. It was created in Germany in 1978 and is considered one of the oldest and most prestigious ecolabels in the world. The label aims to promote environmentally friendly products and services and to support sustainable consumption.

To receive the Blue Angel label, products and services must meet strict environmental criteria that are regularly updated and reviewed. These criteria cover various aspects of a product's life cycle, including raw material extraction, production, use, and disposal. The criteria take into account factors such as resource conservation, pollution prevention, and the use of environmentally friendly materials and production processes.



### Cradle 2 Cradle

The Cradle to Cradle (C2C) certification is a sustainability standard for products, developed by the Cradle 2 Cradle Products Innovation Institute. It is based on the concept of a circular economy, where waste is eliminated, and resources are continuously cycled back into the system. The certification assesses products across five criteria: material health, material reutilization, renewable energy, water stewardship, and social fairness.

To achieve C2C certification, a product must be designed with the end of its life cycle in mind, and all components must be safe for human health and the environment. The certification process includes a review of the product's materials, manufacturing processes, and supply chain, as well as an evaluation of its environmental and social impact.



### EU Ecolabel

The EU Ecolabel certification, also known as the EU Flower, is a label awarded to products and services that meet high environmental standards in the European Union. The label was established in 1992 and aims to promote sustainable consumption and production by encouraging companies to develop and market environmentally friendly products and services.

To receive the EU Ecolabel, products and services must meet strict environmental criteria that are regularly updated and reviewed. These criteria cover various aspects of a product's life cycle, including raw material extraction, production, use, and disposal. The criteria take into account factors such as resource conservation, pollution prevention, and the use of environmentally friendly materials and production processes.



### The Nordic Swan Ecolabel

The Nordic Swan Ecolabel is a voluntary certification system for products and services worldwide. It was established in 1989 and is based on a life-cycle approach, which means that products are evaluated based on their environmental impact throughout their entire life cycle, from raw materials to disposal.

To receive the Nordic Swan Ecolabel, products and services must meet strict environmental criteria that are regularly updated and reviewed. The criteria cover various aspects of a product's life cycle, including raw material extraction, production, use, and disposal. The criteria take into account factors such as resource conservation, pollution prevention, and the use of environmentally friendly materials and production processes.



### The Programme for the Endorsement of Forest Certification

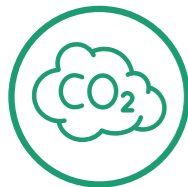
The Programme for the Endorsement of Forest Certification (PEFC) is an international non-profit organisation that promotes sustainable forest management through a certification system. The PEFC certification provides assurance that forest products come from responsibly managed forests and that the social, economic, and environmental values are protected.

The PEFC certification is based on a set of rigorous standards that cover various aspects of forest management, including biodiversity conservation, protection of ecosystem services, and stakeholder engagement. The certification process involves independent third-party auditing to ensure compliance with these standards.



The Weaver programme empowers businesses to implement sustainable practices relating to carbon footprint, waste management, single-use packaging, sustainable products and social responsibility. Weaver will grow your business by:

- ✓ Improve sustainability across five key areas
- ✓ Integrates sustainable practices into operations and community
- ✓ Demonstrates accountability with transparent reporting and certification
- ✓ Builds a sustainability continuous pathway



Carbon Footprint



Waste Management



Social Responsibility



Sustainable Products



Single-use Packaging

### Discover Weaver:

[www.weaver-sustainability.co.uk](http://www.weaver-sustainability.co.uk)

### Super Sticky Recycled Notes & Recycled Notes Tower Packs

Perfect for leaving notes or reminders.



|         |                                    |       |
|---------|------------------------------------|-------|
| 3M06086 | Post-it Assorted Colours 76 x 76mm | Pk 12 |
| 3M06092 | Post-it Assorted Colours 76 x 76mm | Pk 18 |
| 3M06089 | Post-it Canary Yellow 76 x 76mm    | Pk 18 |
| 3M06083 | Post-it Canary Yellow 76 x 76mm    | Pk 12 |
| 3M92670 | Post-it Nature 76 x 76mm           | Pk 16 |
| 3M92972 | Post-it Nature 76 x 127mm          | Pk 16 |
| 3M10065 | Post-it Canary Yellow 76 x 76mm    | Pk 16 |

### Recycled Sticky Notes

For use with design and Z-Note dispensers.



### Q-CONNECT

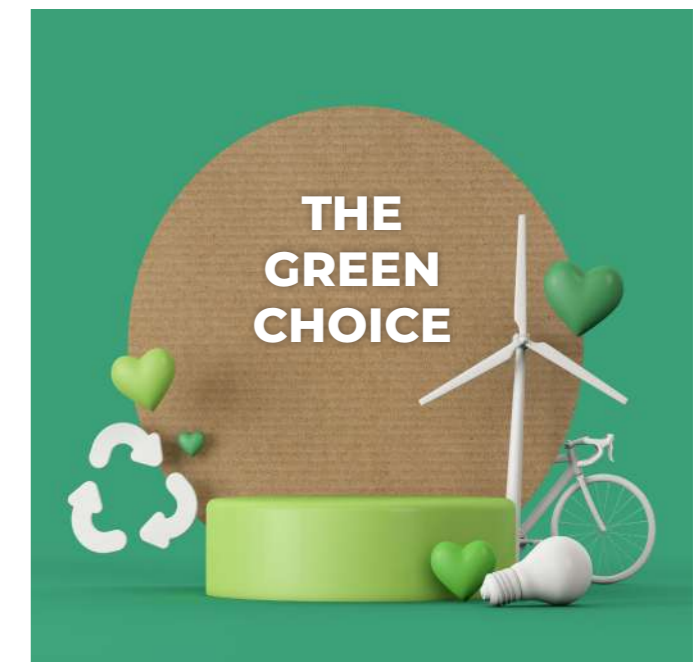
|               |                                   |       |
|---------------|-----------------------------------|-------|
| <b>Yellow</b> |                                   |       |
| KF17321       | Q-Connect Recycled Pad 76 x 76mm  | Pk 12 |
| KF17322       | Q-Connect Recycled Pad 127 x 76mm | Pk 12 |
| KF17323       | Q-Connect Recycled Pad 38 x 51mm  | Pk 12 |
| <b>Pastel</b> |                                   |       |
| KF17324       | Q-Connect Recycled Pad 76 x 76mm  | Pk 12 |
| KF17325       | Q-Connect Recycled Pad 127 x 76mm | Pk 12 |
| KF17326       | Q-Connect Recycled Pad 38 x 51mm  | Pk 12 |

### Scotch® Magic™ Greener Tape

Made with plant-based adhesives.



|         |                              |      |
|---------|------------------------------|------|
| 3M98245 | Scotch Magic Tape 19mm x 20m | Each |
| 3M46459 | Scotch Magic Tape 19mm x 15m | Each |



# 97% NATURAL FORMULA

MADE WITH POTATO STARCH SUGAR & WATER

43g 22g 11g

UP TO **65% RECYCLED PLASTIC\*** **100% RECYCLABLE**

\* refers to the 43g stick, 11g & 22g sticks have up to 40% recycled plastic

|         |                   |      |
|---------|-------------------|------|
| HK05307 | 11g Standard Pack | Pk 5 |
| HK05317 | 22g Medium Pack   | Pk 3 |
| HK05309 | 43g Large Pack    | Pk 2 |

## Self-Inking Word Phrase Stamps

A variety of popular messages for office use.



|         |   |      |
|---------|---|------|
| EM00557 | Colop Word Stamp PRIVATE & CONFIDENTIAL | Each |
| EM42396 | Colop Word Stamp COPY                   | Each |
| EM42397 | Colop Word Stamp PAID                   | Each |
| EM00815 | Colop Word Stamp FIRST CLASS            | Each |
| EM00555 | Colop Word Stamp SCANNED                | Each |
| EM00817 | Colop Word Stamp CHECKED                | Each |
| EM00001 | Colop Word Stamp POSTED                 | Each |

## Foldback Clips

Keep loose paperwork bound together.



Q-CONNECT®

|         |                              |       |
|---------|------------------------------|-------|
| Black   |                              |       |
| KF01282 | Q-Connect Foldback Clip 19mm | Pk 10 |
| KF01283 | Q-Connect Foldback Clip 24mm | Pk 10 |
| KF01284 | Q-Connect Foldback Clip 32mm | Pk 10 |
| KF01285 | Q-Connect Foldback Clip 42mm | Pk 10 |
| KF01286 | Q-Connect Foldback Clip 51mm | Pk 10 |

## Carbon Neutral Letter Tray, Magazine File & Big Box

Environmentally friendly Exacompta Carbon Neutral desktop accessories are made from 100 percent recycled plastic waste and can hold documents up to A4 plus size.



|         |  |      |
|---------|--|------|
| GH11154 | Exacompta Carbon Neutral Letter Tray   | Pk 4 |
| GH11155 | Exacompta Carbon Neutral Magazine File | Pk 4 |
| GH42450 | Exacompta Carbon Neutral Big Box       | Each |

## Forever Letter Tray, Drawer & Pen Pot Holder

Exacompta ECOBlack range is made from recycled orange juice bottles into stylish desk accessories.



|         |                              |      |
|---------|------------------------------|------|
| GH01407 | Forever Letter Tray Black    | Each |
| GH42261 | Forever Drawers Black        | Each |
| GH09372 | Forever Pen Pot Holder Black | Each |

## Drawer Organiser

7 compartment drawer organiser.



|          |                            |      |
|----------|----------------------------|------|
| CEP49102 | CEP Drawer Organiser Black | Each |
|----------|----------------------------|------|

## Plus Letter Trays

A unique range of three sizes of letter trays - slim, standard and jumbo, plus enclosed drawer unit.



|         |                                     |      |
|---------|-------------------------------------|------|
| LZ74861 | Leitz Plus Slim Letter Tray Black   | Each |
| LZ11095 | Leitz Plus Standard Letter Tray     | Each |
| LZ70917 | Leitz Plus Letter Tray Jumbo Black  | Each |
| LZ93534 | Leitz Plus Drawer Unit L/Tray Black | Each |

## Desk Mats

Anti-glare, easy clean desk mats, in new polypropylene, 100% recyclable material.



|         |                                    |      |
|---------|------------------------------------|------|
| KF26792 | Q-Connect PP Desk Mat N/Slip Clear | Each |
| KF26794 | Q-Connect PP Desk Mat N/Slip Black | Each |

## ECO Recycled ABS Stapler & Punch

Full strip, top loading stapler and Medium 2 Hole punch



|         |                                      |      |
|---------|--------------------------------------|------|
| HT00185 | Rapesco Eco Full Strip Stapler Black | Each |
| HT00187 | Rapesco Eco Medium 2 Hole 20 Sheet   | Each |

## Metal Staplers

Quality all metal construction with ABS cap for comfort.



|         |                               |      |
|---------|-------------------------------|------|
| KF01044 | Q-Connect Metal Stapler Black | Each |
| KF02149 | Q-Connect Metal Stapler Blue  | Each |

## Light To Heavy Duty Punches

Supplied with an integrated paper measuring guide.



Q-CONNECT®

|         |                                       |      |
|---------|---------------------------------------|------|
| KF01233 | Q-Connect Light Duty Hole Punch Black | Each |
| KF01234 | Q-Connect Medium Duty 2 Hole Black    | Each |
| KF01235 | Standard Duty                         | Each |
| KF01236 | Heavy Duty                            | Each |

Consumers are becoming more environmentally conscious.

The UK's recycling rate for office paper increased from around 37% in 2001 to 85% in 2020 according to a report by the Confederation of Paper Industries.

According to a survey by the global office supplies company Staples, 61% of UK businesses in 2021 are using eco-friendly cleaning products in their offices to 73% in 2018.





### Cristal® Original

Best selling ball pen with excellent performance.



|         |                                 |       |
|---------|---------------------------------|-------|
| BC10002 | BIC Cristal Ballpoint Pen Black | Pk 50 |
| BC10001 | BIC Cristal Ballpoint Pen Blue  | Pk 50 |
| BC10003 | BIC Cristal Ballpoint Pen Red   | Pk 50 |
| BC76246 | BIC Cristal Ballpoint Pen Green | Pk 50 |

### EColutions™ Ballpoint Pens

An everyday ecological ball pen.



|             |                                     |       |
|-------------|-------------------------------------|-------|
| Stic™       |                                     |       |
| BC56644     | BIC Ecolutions Ballpoint Pen Black  | Pk 60 |
| BC56651     | BIC Ecolutions Ballpoint Pen Blue   | Pk 60 |
| Retractable |                                     |       |
| BC17588     | BIC Ecolutions Clic Stick Pen Black | Pk 50 |
| BC17590     | BIC Ecolutions Clic Stick Pen Blue  | Pk 50 |

### Recycled Ballpoint Pens

Transparent barrels and made of 100% recycled PET bottles.



### Q-CONNECT®

|         |                                 |       |
|---------|---------------------------------|-------|
| KF15002 | Q-Connect Ballpoint 0.7MM Black | Pk 10 |
| KF15001 | Q-Connect Ballpoint 0.7MM Blue  | Pk 10 |

### Bottle To Pen (B2P) Gel Ink Rollerball Pens

Smooth gel ink.



I USED TO BE A BOTTLE NOW I'M A PEN!

|         |   |       |
|---------|---|-------|
| PI37748 | Pilot Bottle 2 Pen Rollerball 0.7 Black | Pk 10 |
| PI37750 | Pilot Bottle 2 Pen Fine Blue            | Pk 10 |
| Refills |   |       |
| PI16331 | Pilot G207 Medium Refill Black          | PK 12 |
| PI16333 | Pilot G207 Medium Refill Blue           | PK 12 |

### STABILO GREEN BOSS® Highlighters

The ecofriendly STABILO BOSS ORIGINAL.



|         |  |      |
|---------|--|------|
| 5543685 | STABILO Standard Green Boss Highlighters | Pk 4 |
| 5556422 | STABILO Pastel Green Boss Highlighters   | Pk 4 |
| 5557284 | STABILO Green Boss Highlighters Deskset  | Pk 8 |

### Highlighter Desksets

Fade-resistant ink for long lasting results.



### Q-CONNECT®

|         |  |      |
|---------|--|------|
| KF11399 | Q-Connect Desk set Neon Highlighters   | Pk 8 |
| KF17806 | Q-Connect Desk set Pastel Highlighters | Pk 8 |

### 2000/2300 Permanent Markers

Low odour permanent marker with ultra resistant nib that will not bend or blunt under writing pressure, writes on virtually any surface.



|         |  |       |
|---------|--|-------|
| BC01095 | Bic 2000 Bullet Permanent Marker Black | Pk 12 |
| BC01099 | Bic 2300 Chisel Permanent Marker Black | Pk 12 |

### Ecoline Permanent Markers

At least 90% of the total plastic used in the markers is made from recycled material (83% post-consumer).



|         |  |       |
|---------|--|-------|
| ED91778 | Edding 21 Ecoline Permanent Marker Black | Pk 10 |
| ED91796 | Edding 22 Ecoline Permanent Marker Black | Pk 10 |

### Chalk Markers

Create weather-resistant, vivid writing on a variety of non-porous surfaces.



|         |                                   |      |
|---------|-----------------------------------|------|
| M104673 | Uni Chalk Markers Medium White    | Pk 4 |
| M104667 | Uni Chalk Markers Medium Assorted | Pk 8 |

### Bic® Matic Original Mechanical Pencils

Classic, comfortable and convenient everyday mechanical pencils.



|         |                                  |       |
|---------|----------------------------------|-------|
| BC01131 | Bicmatic Mechanical Pencil 0.7mm | Pk 12 |
| BC24973 | Bicmatic Mechanical Pencil 0.9mm | Pk 12 |

### Tradition 110 Pencils

Popular pencil for office, school or home.



|         |                                   |       |
|---------|-----------------------------------|-------|
| ST10494 | Staedtler 2B Tradition 110 Pencil | Pk 12 |
| ST10496 | Staedtler HB Tradition 110 Pencil | Pk 12 |
| ST10499 | Staedtler 2H Tradition 110 Pencil | Pk 12 |

### Canister Sharpeners

Pencil sharpeners for graphite and coloured pencils.



|         |                                     |      |
|---------|-------------------------------------|------|
| SK00050 | Swordfish Canister Pencil Sharpener | Each |
|---------|-------------------------------------|------|



## Matt & Glossy Hardback Notebooks

Durable sewn binding, 90gsm Optik Paper®



**Black n' Red**

|          |  |      |
|----------|--|------|
| JDD66174 | Ruled Notebook A4 192 Pgs              | Pk 5 |
| JD66401  | Smart Ruled Notebook A4 96 Pgs         | Each |
| JDB67004 | Wire Ruled Notebook A4 140 Pgs         | Pk 5 |
| JDL67000 | Ruled & Perforated Notebook A5 140 Pgs | Pk 5 |

## Wirebound, Casebound & Reporter Recycled Notebooks

Made from 100% recycled paper.

graffico™



|         |   |       |
|---------|---|-------|
| EN10994 | Graffico Recycled Wirebound Notebook A5 | Pk 10 |
| EN08043 | Graffico Recycled Wirebound Notebook A4 | Pk 10 |
| EN08054 | Graffico Recycled Casebound Notebook A4 | Each  |
| EN08050 | Graffico Recycled Casebound Notebook A5 | Each  |
| EN08034 | Graffico Recycled Reporter Notebook     | Each  |

## Scribble Pads and Shorthand Notebooks

Back board for additional support.



Q-CONNECT®

|         |                                       |       |
|---------|---------------------------------------|-------|
| KF31002 | Q-Connect Shorthand Notebook 150 Leaf | Pk 10 |
| KF31003 | Q-Connect Shorthand Notebook 80 Leaf  | Pk 20 |

## Casebound Notebooks

Fully cased notebook ideal for documenting important records.



Q-CONNECT®

|         |                                       |      |
|---------|---------------------------------------|------|
| KF01060 | Q-Connect Casebound Ruled Notebook A4 | Each |
| KF01061 | Q-Connect Casebound Ruled Notebook A5 | Each |

## Recycled Notebooks

Premium quality notebooks at affordable prices. Various styles to suit the professional.



Q-CONNECT®

|         |                                     |      |
|---------|-------------------------------------|------|
| KF03731 | Wirebound Recycled Hardback 160 Pgs | Pk 3 |
| KF03732 | Wirebound Recycled Hardback 160 Pgs | Pk 3 |

## Premium Recycled Notebooks

Made with care in the UK.



Silvine paper stationery

|         |  |      |
|---------|--|------|
| SV42812 | Silvine Recycled Wirebound Notebook A4 | Pk 5 |
| SV42813 | Silvine Recycled Twinwire Notebook A5  | Pk 5 |
| SV00241 | Silvine Recycled Case Notebook A4      | Pk 5 |

## Wirebound Notebooks

Square cornered notebooks ideal for everyday use.



Q-CONNECT®

|         |                               |      |
|---------|-------------------------------|------|
| KF01072 | Q-Connect Ruled Spiral Pad A4 | Pk 5 |
| KF10039 | Q-Connect Ruled Spiral Pad A5 | Pk 5 |

## Counsels Notebooks

Blue manilla cover with 70gsm white paper.



Q-CONNECT®

|         |                               |       |
|---------|-------------------------------|-------|
| KF01390 | Q-Connect Counsel Notebook A4 | Pk 10 |
|---------|-------------------------------|-------|

## Pukka Pad Recycled Notebooks

High quality, 8mm faint ruled white 80gsm paper with margins and perforations.



|         |                                 |      |
|---------|---------------------------------|------|
| PP00127 | Pukka Recycled Wirebound Pad A4 | Pk 3 |
| PP00128 | Pukka Recycled Wirebound Pad A5 | Pk 3 |

## Premium Carbon Zero Notebooks

Made with care in the UK.



Silvine paper stationery

|         |   |      |
|---------|---|------|
| SV42807 | Silvine CO2 Neutral Wirebound Notebook A4 | Pk 5 |
| SV42808 | Silvine CO2 Neutral Twinwire Notebook A5  | Pk 5 |
| SV00245 | Silvine CO2 Neutral Case Notebook A4      | Pk 5 |

## A4 Memo Pads

Ideal for quick notes.



Q-CONNECT®

|         |                                   |       |
|---------|-----------------------------------|-------|
| KF32001 | Q-Connect Memo Pad Ruled White A4 | Pk 10 |
| KF01388 | Q-Connect Ruled Memo Pad Yellow   | Pk 10 |

## Wiro Things To Do Today Book

20 tasks per page, which can be ticked when completed with a section for any reminders.



Q-CONNECT®

|         |                                  |      |
|---------|----------------------------------|------|
| KF01339 | Q-Connect Thing To Do Today Book | Each |
|---------|----------------------------------|------|



## Large Storage Box

Large FastFold® storage box.



Each box can hold up to:

- Transfer Box Files
- Foolscap 3x 120mm
- Ringbinders 10x
- Lever Arch Files\* 5x A4
- 5x Foolscap



**BB0181070** Bankers Large Storage Box Grey Pk 10

## Business Storage Boxes

Durable and rigid - a fully modular storage solution.



## Q-CONNECT®

**KF21660** Q-Connect Business Storage Box Pk 10  
**KF21665** Q-Connect Brown Storage Box Pk 10

## Recycled Boxes

Made from 100% recycled materials.



**RB06249** 52L 29 x 59 x 40cm 52L Box Each  
**RB06250** 34L 25 x 50 x 35cm 34L Box Each

## Marbled Lever Arch Files

Durable board lever arch file will last and last.



## Q-CONNECT

**KF20001** Q-Connect Lever Arch File A4 Pk 10  
**KF20002** Q-Connect Board Lach Foolscap Pk 10

## Coloured Lever Arch Files

Colourful range of practical lever arch files made from recycled board and paper covers.



## Q-CONNECT®

**KF20038** Q-Connect Lever Arch File A4 Black Pk 10  
**KF20039** Q-Connect Lever Arch File A4 Blue Pk 10  
**KF20041** Q-Connect Lever Arch File A4 Red Pk 10  
**KF20040** Q-Connect Lever Arch File A4 Green Pk 10  
**KF01470** Q-Connect Lever Arch File A4 Yellow Pk 10

## Classy Lever Arch Files

Laminated paper over board for a high gloss, metallic look.



**BX01426** Oxford 70MM Lever Arch File A4 Black Each  
**BX01429** Oxford 70MM Lever Arch File A4 Blue Each  
**BX01447** Oxford 70MM Lever Arch File A4 Metallic Blue Each  
**BX01444** Oxford 70MM Lever Arch File A4 Metallic Purple Each  
**BX01438** Oxford 70MM Lever Arch File A4 Metallic Silver Each

## Paper Over Board Ring Binders

High quality paper over board ring binders.



## Q-CONNECT®

**KF20034** Q-Connect 2 Ring Binder A4 Black Pk 10  
**KF20035** Q-Connect 2 Ring Binder A4 Blue Pk 10  
**KF20036** Q-Connect 2 Ring Binder A4 Red Pk 10  
**KF20037** Q-Connect 2 Ring Binder A4 Green Pk 10  
**KF01473** Q-Connect 2 Ring Binder A4 Yellow Pk 10  
**KF01475** Q-Connect 2 Ring Binder A4 Purple Pk 10

## A4 Classy Ring Binders

Stylish paper on board ring binders with a high gloss finish.



**BX10400** Oxford Ring Binder LAM 25MM A4 Light Blue Each  
**BX10411** Oxford Ring Binder LAM 25MM A4 Metallic Purple Each  
**BX10405** Oxford Ring Binder LAM 25MM A4 Metallic Silver Each  
**BX10383** Oxford Ring Binder LAM 25MM A4 Black Each  
**BX10387** Oxford Ring Binder LAM 25MM A4 Blue Each

## Box Files

A quality range of softwood constructed coloured box files.



## Q-CONNECT®

**KF20017** Q-Connect 75MM Box File Black Pk 5  
**KF20018** Q-Connect 75MM Box File Blue Pk 5  
**KF20016** Q-Connect 75MM Box File Red Pk 5  
**KF20015** Q-Connect 75MM Box File Green Pk 5  
**KF01469** Q-Connect 75MM Box File Yellow Pk 5  
**KF20012** Q-Connect 75MM Box File Cloud Pk 10

## A4 Presentation Ring Binders

Personalise your presentation with the Q-CONNECT® range of PVC welded board presentation binders.



## Q-CONNECT®

**KF01325Q** Q-Connect 4D Ring Binder 25MM A4 White Pk 6  
**KF01326** Q-Connect 4D Ring Binder 25MM A4 Red Each  
**KF01327** Q-Connect 4D Ring Binder 25MM A4 Blue Each  
**KF01328** Q-Connect 4D Ring Binder 25MM A4 Black Each  
**KF01329Q** Q-Connect 4D Ring Binder 40MM A4 White Pk 6  
**KF01330** Q-Connect 4D Ring Binder 40MM A4 Red Each  
**KF01331** Q-Connect 4D Ring Binder 40MM A4 Blue Each  
**KF01332** Q-Connect 4D Ring Binder 40MM A4 Black Each

## Card Dividers

Made from quality card material for strong durability.



**BX05000** ELBA A4 10 Part Card Dividers Each  
**BX40809** ELBA A4 Extra Wide 10 Part Card Dividers Each  
**BX05748** ELBA A3 10 Part Card Dividers Each

## Subject Dividers & A-2 Index

A4 subject dividers, functional and easy to use. Plus, hardwearing A-Z buff index.



## Q-CONNECT®

**KF26081** Q-Connect 5 Part Subject Divider A4 Each  
**KF26082** Q-Connect 10 Part Subject Divider A4 Each  
**KF01515** Q-Connect 12 Part Subject Divider A4 Each  
**KF26011** Q-Connect Manilla Divider A-Z 20 Part Each

## A4 Punched Pockets & Cut Flush Folders

Manufactured from hardwearing anti-static polypropylene.



### Q-CONNECT®

|         |                                |        |
|---------|--------------------------------|--------|
| KF24001 | Q-Connect Punched Pockets A4   | Pk 100 |
| KF24002 | Q-Connect Cut Flush Folders A4 | Pk 100 |

## LEITZ A4 Recycled Punched Pockets & Cut Flush Folder

100% recycled material and 100% recyclable.



|         |   |        |
|---------|---|--------|
| LZ39486 | LEITZ Recycled Punched Pockets A4         | Pk 100 |
| LZ39783 | LEITZ Recycled Punched Pockets A4         | Pk 25  |
| LZ39719 | LEITZ Recycled Cut Flush Folders A4 Clear | Pk 100 |
| LZ39784 | LEITZ Recycled Cut Flush Folders A4 Clear | Pk 25  |

## ECO A4 and A3 Popper Wallets

A4+ and A3 wallets with a fold over flap and popper closure.



|         |                                       |      |
|---------|---------------------------------------|------|
| HT15178 | RAPESCO Eco Popper Waller A4 Clear    | Pk 5 |
| HT15175 | RAPESCO Eco Popper Waller A4 Assorted | Pk 5 |
| HT15184 | RAPESCO Eco Popper Waller A3 Clear    | Pk 5 |

## Document Wallets

Strong manilla document wallets suitable for A4 and foolscap papers.



### Q-CONNECT®

|         |   |       |
|---------|---|-------|
| KF23010 | Q-Connect 1/2 Flap Document Wallet Buff | Pk 50 |
| KF23011 | Q-Connect Document Wallet Blue          | Pk 50 |
| KF23017 | Q-Connect Document Wallet Yellow        | Pk 50 |
| KF23016 | Q-Connect Document Wallet Red           | Pk 50 |
| KF01490 | Q-Connect Document Wallet Assorted      | Pk 50 |

## Transfer Files

Manufactured from 300gsm manilla. Compressor bar holds documents neatly in place. Spring mechanism allows fast insertion and extraction of papers anywhere in the file.



### Q-CONNECT®

|         |                                    |       |
|---------|------------------------------------|-------|
| KF26061 | Q-Connect Transfer Files A4 Blue   | Pk 25 |
| KF26062 | Q-Connect Transfer Files A4 Buff   | Pk 25 |
| KF26060 | Q-Connect Transfer Files A4 Green  | Pk 25 |
| KF26059 | Q-Connect Transfer Files A4 Orange | Pk 25 |

## Xerox Recycled

This low whiteness paper is made from 100% Post Consumer Waste and is ideal for everyday home or office printing.



|         |                                |         |
|---------|--------------------------------|---------|
| XX08387 | Xerox Recycled A4 Copier Paper | Pk 2500 |
|---------|--------------------------------|---------|

## General DL, C5 & C4 White Envelopes

Ideal for everyday use.



| Code   | Description     | GSM | Window | Seal Type | Pack |
|--------|-----------------|-----|--------|-----------|------|
| KF3454 | DL White Wallet | 80  | -      | Self Seal | 1000 |
| KF3455 | DL White Wallet | 80  | A      | Self Seal | 1000 |
| KF3469 | C5 Pocket       | 90  | -      | Self Seal | 500  |
| KF3406 | C5 Pocket       | 90  | A      | Self Seal | 500  |
| KF3499 | C4 Pocket       | 90  | -      | Self Seal | 250  |
| KF3501 | C4 Pocket       | 90  | B      | Self Seal | 250  |

## Avery® Recycled Laser Address, Parcel & Filing Labels

Labels made from 100% recycled material



| Code    | Avery Code | Label Size (mm) | Labels/Sheet | Sheets/Pack |
|---------|------------|-----------------|--------------|-------------|
| AV14264 | LR7160-15  | 63.5 x 38.1     | 21           | 15          |
| AV14265 | LR7162-15  | 99.1 x 33.9     | 16           | 15          |
| AV14266 | LR7163-15  | 99.1 x 38.1     | 14           | 15          |
| AV14267 | LR7165-15  | 99.1 x 67.7     | 8            | 15          |
| AV14271 | LR4761-15  | 61 x 192        | 4            | 15          |

## Paper Documents Enclosed Envelopes

Rigid paper solution.



|         |                                    |         |
|---------|------------------------------------|---------|
| MA07627 | Paper Documents Enclosed Wallet A5 | Pk 1000 |
| MA07628 | Paper Documents Enclosed Wallet A6 | Pk 1000 |

## Protective Padded Envelopes

Heavy weight and sturdy padded envelopes which take items up to 50mm thick.



### Q-CONNECT®

|        |                                     |        |
|--------|-------------------------------------|--------|
| KF3530 | Q-Connect C5 Padded Gusset Envelope | Pk 100 |
| KF3531 | Q-Connect C4 Padded Gusset Envelope | Pk 100 |
| KF3532 | Q-Connect B4 Padded Gusset Envelope | Pk 100 |
| KF3533 | Q-Connect E4 Padded Gusset Envelope | Pk 100 |

## Kraft Paper Tape

Offers an environmentally-friendly, paper-based alternative to traditional tapes.



|         |                         |      |
|---------|-------------------------|------|
| MA80072 | Fragile Tape 50MM X 50M | Each |
|---------|-------------------------|------|



## Earth Non-Magnetic Melamine Whiteboards

Top quality drywipe surface.

Earth **Bi-Office**



|          |   |      |
|----------|---|------|
| BQ115091 | Bi-Office Earth Drywipe Board 1200 x 900mm  | Each |
| BQ112791 | Bi-Office Earth Drywipe Board 1800 x 1200mm | Each |

## Monolith Blue Line Travel Range

Made from recycled plastic bottles.



|   |         |   |      |
|---|---------|---|------|
| A | HMG3423 | Monolith Blue Line 15.6" Laptop Backpack                  | Each |
| B | HMG3425 | Monolith Blue Line 15.6" Laptop Hybrid Briefcase/Backpack | Each |
| C | HMG3427 | Monolith Blue Line 15.6" Laptop Briefcase                 | Each |
| D | HMG3429 | Monolith Blue Line 13.3" Chromebook Tablet Briefcase      | Each |

## Tea Towels & Dishcloths

Absorbent tea towels in assorted colours and great quality all round cleaning cloths.



|          |  |       |
|----------|--|-------|
| CPD02228 | 2Work Cotton Tea Towel Checked 480X710MM | Pk 10 |
| CX01693  | 2Work Cotton Tea Towel White 450X740MM   | Pk 10 |
| CX02705  | 2Work Cotton Glass Cloth 500X760MM       | Pk 10 |
| CPD30019 | 2Work White Dishcloths 400X280MM         | Pk 10 |

## Antibacterial & Pink Pearl Hand Wash

A luxury hand wash designed to cleanse and condition the skin.



|         |                                 |      |
|---------|---------------------------------|------|
| 2W07294 | 2Work Hand Soap Pink Pearl 5L   | Each |
| 2W03975 | 2Work Antibacterial Handwash 5L | Each |

## BiC Velleda Whiteboard Markers

Perfect for professionals who want to make presentations with clarity and style



|         |                                  |          |
|---------|----------------------------------|----------|
| BC04692 | BiC Velleda 1701 Marker Black    | Box 12   |
| BC03784 | BiC Velleda 1701 Marker Blue     | Box 12   |
| BC03504 | BiC Velleda 1701 Marker Assorted | Wallet 4 |
| BC01754 | BiC Velleda 1751 Marker Assorted | Wallet 4 |

## Laminating Pouches

Available from credit card size to A3. Matte and gloss pouches.



|         |     |           |       |    |     |
|---------|-----|-----------|-------|----|-----|
| KF04114 | 160 | 216 x 303 | Gloss | A4 | 100 |
| KF04116 | 250 | 216 x 303 | Gloss | A4 | 100 |
| KF04122 | 160 | 303 x 426 | Gloss | A3 | 100 |

## Washing Up Liquid and Oven Cleaner

A concentrated washing up liquid for hand use.



|         |                                       |      |
|---------|---------------------------------------|------|
| 2W04170 | 2Work Washing Up Liquid Fresh 5 Litre | Each |
|---------|---------------------------------------|------|

## Bleach

A concentrated bleach solution that kills a wide range of bacteria and prevents the build up of slime and fungi.



|         |                            |      |
|---------|----------------------------|------|
| 2W03978 | 2Work Thin Bleach 5 Litre  | Each |
| 2W03977 | 2Work Thick Bleach 5 Litre | Each |

## Earth Non-Magnetic Easel & A1 Flipchart Pads

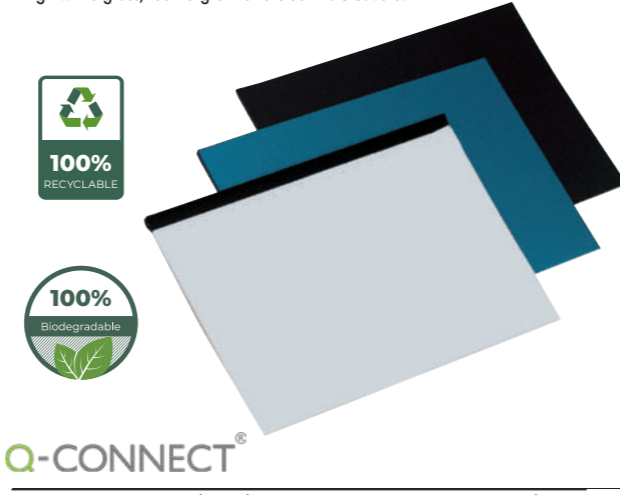
Quality flipchart easel manufactured from eco-friendly materials.



|         |                               |      |
|---------|-------------------------------|------|
| BQ50083 | Bi-Office Earth Tripod Easel  | Each |
| BQ53301 | Bi-Office A1 Gridded Flip Pad | Pk 5 |

## Binding Covers

High white gloss, leathergrain and clear PVC covers.



|         |  |        |
|---------|--|--------|
| KF00498 | Q-Connect A4 White Binding Covers              | Pk 100 |
| KF00502 | Q-Connect A4 Plain Leathergrain Binding Covers | Pk 100 |
| KF00500 | Q-Connect A4 Royal Blue Binding Covers         | Pk 100 |
| KF00501 | Q-Connect A4 Black Binding Covers              | Pk 100 |

## Cheeky Panda Toilet Tissue

Sustainable 3 ply Toilet tissue made from bamboo.



|          |                                       |       |
|----------|---------------------------------------|-------|
| CPD63017 | Cheeky Panda Toilet Tissue 200 Sheets | Pk 48 |
| CPD63038 | Cheeky Panda 150M Mini Jumbo Roll     | Pk 12 |
| CPD63040 | Cheeky Panda 300M Maxi Jumbo Roll     | Pk 6  |

## Multi Surface Cleaner

A surface safe multi-surface cleaner, which incorporates a fragrant aroma to clean, freshen and beat stubborn stains.



|         |                                     |      |
|---------|-------------------------------------|------|
| 2W03985 | 2Work Multi Surface Cleaner 5 Litre | Each |
|---------|-------------------------------------|------|



### Recycling Bin Kit

Addis pack of three recycling bins Each bin has a colour coded lid and label to identify the contents.



AG813419 Addis Recycling Bin Kit Pk 3

### Recycling Bin

Hexagonal recycling bin ideal for offices, warehouses and other shared work environments.



2W04262 2Work Green Recycling Bin Pk 3

### Refuse Sacks Bulk Boxes

Handy bulk boxes of quality refuse sacks for large volume users.



|                   |   |        |
|-------------------|---|--------|
| W457/725 x 1975mm |   |        |
| KF73375           | 2Work Black Light Duty Refuse Sack        | Pk 200 |
| KF73376           | 2Work Black Heavy Duty Refuse Sacks       | Pk 200 |
| KF76961           | 2Work Black Extra Heavy Duty Refuse Sacks | Pk 200 |
| KF73377           | 2Work Clear Light Duty Refuse Sacks       | Pk 200 |

### Compostable Gloves

Manufactured from: EN 13432 compliant material.



|          |                                  |        |
|----------|----------------------------------|--------|
| HEA02758 | Shield Compostable Gloves Medium | Pk 200 |
| HEA02759 | Shield Compostable Gloves Large  | Pk 200 |

### Car Care

Car cleaning for inside and out.



2W06176 2Work Car Shampoo with Wax 5L Each

### Microfibre Cloths

Our durable microfibre cloths absorb dirt, dust and spills on any hard surface.



2NT01262 2Work Microfibre Cloth Blue 400 x 400 Pk 10

# CHECK OUT MORE STATS!



The UK office sector uses around 4 million tonnes of paper every year, which is equivalent to approximately **8 billion sheets of A4 paper.**



The office supplies industry generates around **300,000 tonnes of waste each year, including paper, cardboard, and packaging materials.**



The carbon footprint of the UK office supplies industry is estimated to be around **3.2 million tonnes of CO2 equivalent each year**, which is roughly equivalent to the annual emissions of over 600,000 cars.



The UK has set a target of achieving net-zero carbon emissions by 2050, and by 2030, the aim is to reduce greenhouse gas emissions by at least 68% compared to 1990 levels.



The government is targeting a 50% reduction in food waste by 2030 and a 75% reduction in plastic packaging waste.



**If you want to procure both smarter and greener, get in touch today and arrange a sustainability audit!**





 All of the products inside this mailer are Weaver recommended →